



Security Reporter 3.2.0

Trustwave is pleased to announce the release of Security Reporter software version 3.2.0, available for downloading to a workstation running as a virtual machine, or to your SR appliance. This upgrade is compatible with a Web Filter appliance running software version 4.0.10 or later, and/or a Secure Web Gateway appliance running software version 9.2 or later.

NOTE: If the SR is currently processing a significant volume of logs, it could take up to four hours for this software update to be installed.

FREQUENTLY ASKED QUESTIONS

Q. At a glance, what are some of the differences between SR models built by Equus and those built by IBM?

A. SR 505 (IBM) and all models built by Equus are 1U units, with the 300 series model half the width of a standard 1U unit. For the 700 series models, SR 700 and 730 Equus models ship with 12 GB RAM, while the 2U SR 705 and 735 IBM models now ship with 24 GB RAM. Storage capacity is 750 GB for SR 500, and 1.6 TB for SR 505. Storage capacity is 1.5 TB for SR 700 and 2.3 TB for SR 705. Attached storage options are available for SR 730 and 735 using a Nexsan storage device:

- Basic storage: 3 TB for SR 730.
- Standard storage: 6 TB for SR 730 or SR 735.
- Extended storage: 12 TB for SR 730 or SR 735.

Q. What are the benefits of using SR Virtual instead of the SR Appliance option?

A. SR Virtual lets you use an existing computer to run the SR software image as a virtual machine, instead of installing and configuring a separate SR appliance. Virtualization is more cost effective in ensuring redundancy, failover and disaster recovery.

Q. Which type of server software is required in order to use SR Virtual?

A. M86 has tested VMware ESXi 4.1 and 5.0 and supports these software versions, although other virtualization software may be used. Please consult with your M86 accounts representative or an M86 solutions engineer about software compatibility with SR Virtual.

Q. Can I use an SWG and a Web Filter with SR Virtual?

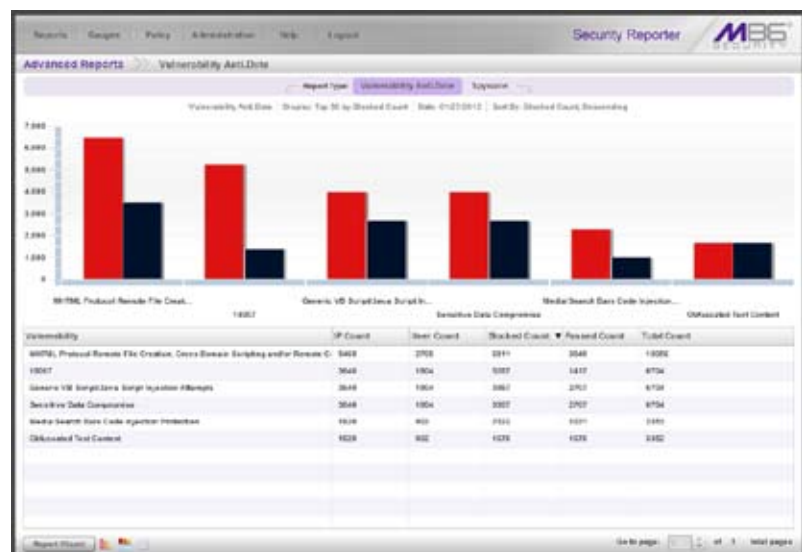
A. As with the SR Appliance version of the SR product, an SWG (Appliance or Virtual) and/or Web Filter (Appliance or Virtual) can be used with SR Virtual.

Q. Which image sizes are available for SR Virtual?

A. For this release, SR Virtual is available in 500GB and 1TB image sizes.

NEW FEATURES AND ENHANCEMENTS

New Advanced Reports available for SWG



The new Advanced Reports selection, available from the Security Reports menu, lets SWG users generate Vulnerability Anti.Dote and Spyware reports, and use a unique Report Wizard for customizing these types of reports.

Security Reports > Advanced Reports > Vulnerability Anti.Dote

The new Vulnerability Anti.Dote report—available if using SWG software version 10.0 or earlier—provides the ability to generate reports for SWG’s active, real-time content inspection feature that protects your network against vulnerabilities.

- By default, the report graph shows the top six blocked vulnerabilities and the number of instances for each of these vulnerabilities which passed.
- For each vulnerability record in the table, by default statistical counts are included for the number of IPs, users, blocked and passed vulnerabilities, and total instances for today’s date.
- Clicking **Report Wizard** at the bottom left of the panel takes you to the Report Wizard >> Vulnerability Anti.Dote panel where you can download, email, save, or run the report using customized settings.

(continued)

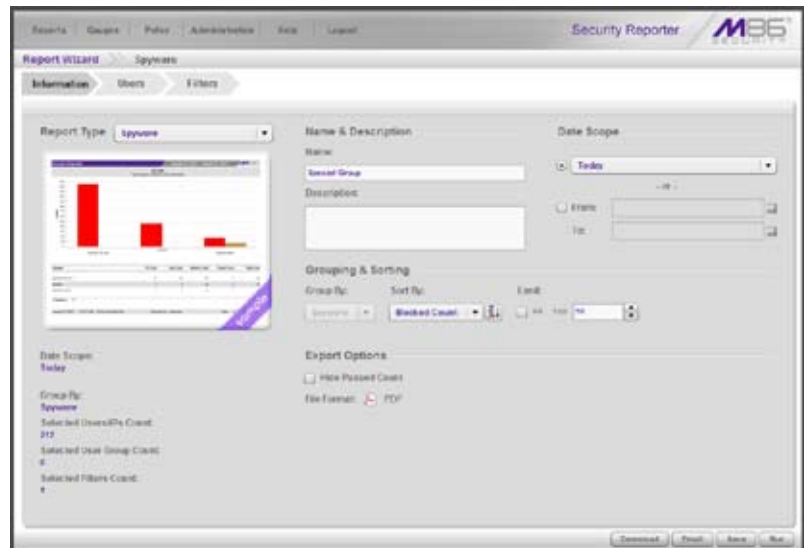
Security Reports > Advanced Reports > Spyware

The new Spyware report provides the ability to generate reports for blocked and passed spyware detected by the SWG.

- By default the report graph shows the top six blocked spyware and the number of instances for each of these spyware instances which passed.
- For each spyware record in the table, by default statistical counts are included for the number of IPs, users, blocked and passed spyware, and total instances for today's date.
- Clicking **Report Wizard** at the bottom left of the panel takes you to the Report Wizard >> Spyware panel where you can download, email, save, or run the report using customized settings.

Security Reports > Advanced Reports > Report Wizard

The unique Report Wizard for Advanced Reports lets you run, download, email, and save a customized Vulnerability Anti.Dote or Spyware report.



The wizard includes the following tabs: Information, Users, and Filters, and the following buttons: Download, Email, Save, and Run.

- The Information tab is comprised of the following sections: Report Type, Name & Description, Grouping & Sorting, Export Options, and Date Scope. A sample screen shot of the selected report type displays, along with data specified in the three tabs.
- The Users tab lets you specify the user groups or usernames/IPs of individuals to include in the report.
- The Filters tab lets you specify any pertinent SWG filters to use before generating the report.
- Clicking the **Download** button downloads a PDF of the generated report.
- Clicking the **Email** button displays the Email Report panel where you specify email information to include when sending the report on demand. This email information will be used in this session only.

NOTE: To retain email information for a Vulnerability Anti.Dote or a Spyware report, you must first save the report, and then schedule the report to run at a designated time using the Reports > Report Schedule panel.

- Clicking the **Save** button saves the current report settings.
- Clicking the **Run** button displays the report view with the current report settings.

(continued)

Saved Reports usability enhancements

Reports > Saved Reports

The following enhancements have been made in the Saved Reports panel to streamline the usage and management of saved Drill Down Reports, Security Reports, and Advanced Reports:

- The Reports table now includes the following informational columns: Name (saved report name), Description (if saved for the report), Report Type (Drill Down, Security, Spyware, or Vulnerability Anti.Dote), and Last Updated (MM/DD/YYYY HH:MM:SS AM/PM).
- At the bottom right of the panel, the Run button has been removed, and the following buttons now display in this order: Edit, Delete, Duplicate, Download (new button), and Email:
- Selecting a report and clicking **Download** will download the current report on demand.
- If selecting an Advanced Report (Spyware or Vulnerability Anti.Dote) from the Reports table, the Email button is disabled since on demand emails for these types of reports are sent via the Advanced Reports wizard's Email Report panel. Email settings for Advanced Reports are saved via the Reports > Report Schedule panel. Email information for Drill Down Reports and Security Reports is either entered when creating the report or via Saved Reports.

Report Schedule usability enhancements

Reports > Report Schedule

The following enhancements have been made in the Report Schedule panel to streamline the process of creating and maintaining a schedule for the execution and delivery of Drill Down Reports, Security Reports, and Advanced Reports:

- Table columns have been renamed and reorganized accordingly: Schedule Name (formerly Name); Custom Report Name; Frequency (formerly Interval) which now includes the day of the week for a Weekly report, or the Day of the month for a Monthly report; Last Run; and Next Run. The Start Time column has been removed since its content is similar to that included in the Next Run column.
- The Refresh button displays at the bottom left of the panel, with all other buttons displayed at the bottom right: Add (formerly Add Event), Edit (new), and Delete.
- Clicking **Add** or **Edit** displays the new Add Schedule or Edit Schedule panel accordingly, which includes the Schedule Settings section to the left and the Recipients, Message, and Delivery Options sections to the right. Sections at the right side of the panel are only enabled for Advanced Reports, since this criteria cannot be entered when saving that type of report. For Drill Down Reports and Security Reports, this information is entered when saving the report.

Schedule Report, Schedule Settings field name modifications

For consistency with Reports table column name modifications, new field names "Schedule Name" instead of "Name," and "Frequency" instead of "When to Run", now display in the Schedule Report and Schedule Settings pop-up boxes.

The Schedule Report pop-up box is accessible via the Save and Schedule button in a Drill Down Report:

- Drill Down Reports > report > Report Settings > Save > Save and Schedule
- Drill Down Reports > Report Wizard > Save > Save and Schedule

The Schedule Settings pop-up box is accessible via the Schedule Settings link in the Report Wizard panel of a Security Report:

- Security Reports > report > Report Wizard > Schedule > Schedule Settings
- Security Reports > Report Wizard > Schedule Settings

(continued)

Security Reporter 3.2.0

ABOUT TRUSTWAVE

Trustwave is the leading provider of on-demand and subscription-based information security and payment card industry compliance management solutions to businesses and government entities throughout the world. For organisations faced with today's challenging data security and compliance environment, Trustwave provides a unique approach with comprehensive solutions that include its flagship TrustKeeper® compliance management software and other proprietary security solutions. Trustwave has helped thousands of organisations—ranging from Fortune 500 businesses and large financial institutions to small and medium-sized retailers—manage compliance and secure their network infrastructure, data communications and critical information assets. Trustwave is headquartered in Chicago with offices throughout North America, Central and South America, Europe, the Middle East, Africa, and Asia-Pacific. For more information, visit <https://www.trustwave.com>.

Blocked Count column in summary Drill Down Reports

Reports > Drill Down Reports

In the summary report, the new Blocked Count column is now included after the Object Count column. Clicking a link in that column displays a detail report showing all pertinent blocked records.

Detail Drill Down Report Wizard usability enhancements

Reports > Drill Down Reports > Report Wizard

The following modifications have been made for the Drill Down Report Wizard's Detail Report option:

- Primary radio button selections for "Specific Detail by Page" and "Specific User Detail by Object" have been removed.
- The ability to specify particular details for inclusion in a report is now available at the new Detail Type field which includes the following detail report selections: Pages Only (default selection), Objects Only, All Records.

Security Reports usability enhancement

Reports > Security Reports > report selection

The Report Settings menu link at the bottom left of the report view panel has been renamed Report Wizard since selecting any menu option (Run, Save, or Schedule) takes you to the Security Report Wizard panel.

User Group Import now accessible from Device Registry

Administration > Device Registry

The User Group Import screen that was previously available from the Administrator console's Database menu has been removed from the user interface. The feature for importing user groups from a Web Filter is available in the Report Manager by navigating to Administration > Device Registry > Refresh Settings, selecting User Groups, and then clicking Synchronize.

Resolved Known Issues

- Go to <http://www.m86security.com/software/8e6/ts/sr-rki.html> to view the resolved known issues for this software release.

TRY BEFORE YOU BUY

Trustwave offers free product trials and evaluations. Simply contact us or visit www.trustwave.com/free-trials.php



Version 08.06.12

© Copyright 2012. Trustwave. All rights reserved.

This document is protected by copyright and any distribution, reproduction, copying, or decompilation is strictly prohibited without the prior written consent of Trustwave. No part of this document may be reproduced in any form or by any means without the prior written authorization of Trustwave. While every precaution has been taken in the preparation of this document, Trustwave assumes no responsibility for errors or omissions. This publication and features described herein are subject to change without notice.

While the authors have used their best efforts in preparing this document, they make no representation or warranties with respect to the accuracy or completeness of the contents of this document and specifically disclaim any implied warranties of merchantability or fitness for a particular purpose. No warranty may be created or extended by sales representatives or written sales materials. The advice and strategies contained herein may not be suitable for your situation. You should consult with a professional where appropriate. Neither the author nor Trustwave shall be liable for any loss of profit or any commercial damages, including but not limited to direct, indirect, special, incidental, consequential, or other damages.